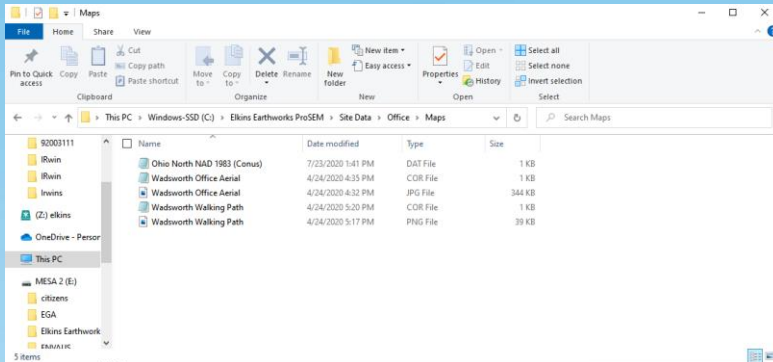


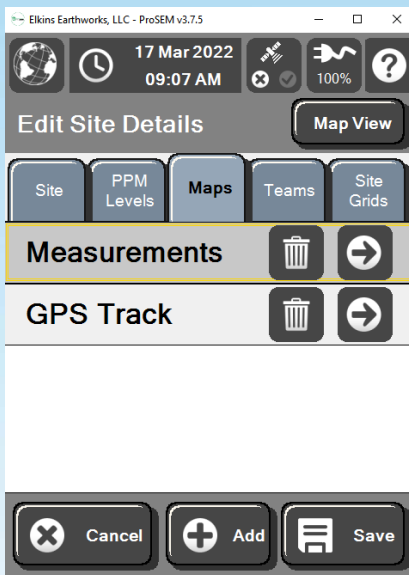


Loading ProSEM Maps on Mesa 2/3

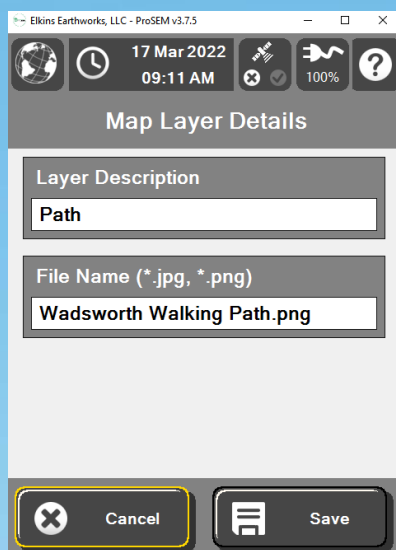
1. If you have not already done so, create your site in the ProSEM app under Settings>Sites>Add
2. Unzip the provided map files from folder to C: Elkins Earthworks ProSEM>Site Data>" your site name">Maps.



3. In the ProSEM app go to Settings>Sites>"your site name," then select the "Maps" tab.



4. Select "Add" then type in a description for your path or grid layer.
5. Under "File Name" select the path or grid .png file, then select "Save"



6. Select “Add” again then type in a description for your Aerial layer.

7. Under “File Name” select the aerial .jpg file then select “Save”



8. The map may now be previewed by using the “Map View” button.

9. If everything looks good, press “Save” to save the site and return to the main settings menu.